



Bobcat

One Tough Animal

20–100 kVA GENERATORS

🌐 Europe





TOUGH CONDITIONS. TOUGHER PEOPLE.

At Bobcat, we're not just building machines—we're also celebrating the people who push them to the limit. Because real strength isn't just built into machines—it comes from the people who operate them.

[LEARN MORE](#)

INTRODUCTION

ONE TOUGH ANIMAL



BOBCAT'S HISTORY

In 1958, Melroe Manufacturing Company introduced a compact front-end loader that evolved quickly into the M400, the world's first true skid steer loader. The company soon adopted what became the world-famous 'Bobcat' brand — and its success paved the way for the global compact equipment industry we see today.

YEARS OF EXPERIENCE

By acquiring Doosan Portable Power, Bobcat harnesses over 120 years of expertise and excellence in the development, construction, and rigorous testing of portable power machines. This partnership ensures that each machine leaving the factory carries the Doosan legacy, with the enduring reliability of Bobcat deeply ingrained in its DNA.



BOBCAT TODAY

Equipped with Bobcat-developed technologies and packed with modern features, these machines empower customers to accomplish more every day, no matter the task at hand.



OUR MISSION

We empower operators to accomplish more, while working in the toughest conditions and tightest situations. When our customers have the will, we provide the way.

TOUGH, DURABLE, & RELIABLE

DESIGNED TO DO MORE

Our generators offer unmatched performance in a durable, easy-to-move, and reliable package, helping you accomplish more every day. Equipped with the best engines in their respective categories, an intuitive interface, a heavy-duty yet quiet canopy, and multiple connection options, these generators deliver power that transforms the way you work.



DESIGNED TO PERFORM

Constructed with top-quality components and engineered to be compact, these machines will stand by your side as a dependable power source for years to come.

P. 7



GET THE JOB DONE

With a versatile 50/60Hz switch, a leak-preventing bunded base, an auto start/stop function, and more, Bobcat generators are designed to simplify your workflow.

P. 8



HIGHER RELIABILITY. LONGER UPTIME

Bobcat 20-100 kVA generators are backed by an outstanding standard warranty for absolute peace of mind. And their long service intervals make keeping them in top shape quick and simple.

P. 9



HASSLE-FREE TRANSPORT

Easily tow Bobcat generators behind a passenger car with our optional running gear, simplifying transportation and adding efficiency to your workday.

P. 13

PERFORMANCE



EFFICIENT AND COMPACT

Bobcat generators are incredibly easy to use and transport, thanks to their intuitive controls and powerful performance, all packed into a compact size.



PREMIUM COMPONENTS AND BUILD

With powerful and reliable engines, a high-quality controller, and a robust alternator, Bobcat generators provide best-in-class power in a compact, dependable package.



OUTSTANDING FUEL EFFICIENCY

Thanks to their low fuel consumption, Bobcat 20-100 kVA generators run longer than comparable models - helping you save on running costs while protecting the environment.



SILENT OPERATION

We've equipped our generators with high-performance mufflers to ensure they offer the quietest operation on the market. Plus, the noise from Bobcat generators has a lower frequency than comparable products, making it less disruptive in populated areas, at events, or during nighttime use.

CONTROLS & CONNECTIONS

BUILT TO LAST



► PREMIUM CONTROL PANEL

With manual buttons and gauges integrated into the control panel, operation remains smooth and hassle-free, even with gloves on.



► CENTRALIZED DRAINING



Save time and effort thanks to the conveniently located draining ports.

► OPTIONAL SYNCHRONIZATION



With the synchronizing option available for the PG100, you can connect multiple machines in parallel to boost overall power delivery.

► POWER LOCKS



With optional power locks, you always have control over the generator's power output.

► TOUGHNESS IS IN OUR DNA

We know how tough the industry and our users are. That's why we rigorously test each machine for optimal performance, reliability, and toughness. From the top of the machine to the running gear, every part is crafted with the best materials and packed with innovative technologies, enabling you to achieve more every day.



► LOW-MAINTENANCE OPERATION

Enjoy a low total cost of ownership and unbeatable uptime with long service intervals and high reliability.



2 YEAR WARRANTY

► WARRANTY

Enjoy peace of mind with a standard 2-year / 2 000-hour warranty on the entire machine and a 2-year / 4 000-hour warranty on the alternator.

► ROBUST BUILD

Designed for stability, the generator's doors remain securely sealed during transport and on-site tasks. Plus, the strong and durable chassis guarantees great maneuverability across any terrain.



CHOOSE YOUR ANIMAL

20 kVA GENERATOR

COMPACT AND VERSATILE

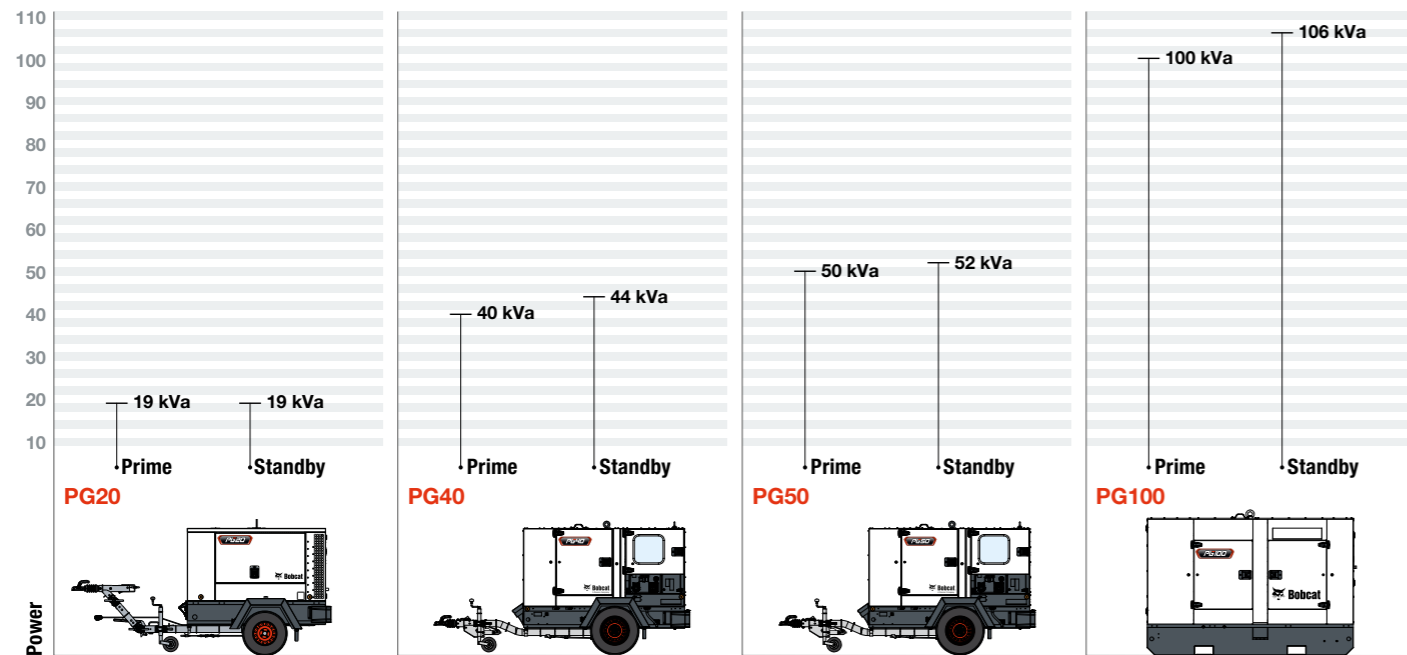
Reliable, high-performing, compact, and efficient, the PG20 is everything you'd want in a small generator. With a premium Yanmar engine, best-in-class runtime, high-quality components, and low-noise operation, this machine is perfect for a wide variety of applications for both small and big businesses.



40–50 kVA GENERATORS

POWERFUL & SMART

Level up your job site with Bobcat's PG40 and PG50. These small generators combine intelligent technology and high performance in a durable, compact package that's easy to transport. With optional smart low-load management, best-in-class noise levels, and a built-in 50/60 Hz switch, these machines provide a reliable source of power for any application.



100 kVA GENERATOR

THE ULTIMATE IN POWER & RELIABILITY

The PG100 mid-size generator employs the latest Bobcat technology to deliver a supremely powerful, efficient, and reliable power source. With low noise levels, extended service intervals, intelligent low-load management, and a range of safety features, this generator provides optimal performance for your business.



SPECIFICATIONS

	PG20	PG40	PG50	PG100
ELECTRICAL PERFORMANCE AND COMPONENTS				
Models	19 kVA (15,2 kW) 27 Amps	40 kVA (32 kW) 58 Amps	50 kVA (40 kW) 72 Amps	100 kVA (80 kW) 144 Amps
Prime rating power @ 1 500 RPM (50 Hz)	19 kVA	40 kVA	50 kVA	100 kVA
Standby power @ 1 500 RPM (50 Hz)	19 kVA	44 kVA	52 kVA	106 kVA
Frequency	50 Hz / 60 Hz			
Voltage, single phase / triple phase (50 Hz)	230 V / 400 V			
Maximum sound power level @ 75% load (dB)	89	88	89	91
Alternator make	Leroy Somer		Stamford	
Alternator model	TAL 040 F	S1L2N1	S1L2R1	UCI274D
Alternator excitation type STD / OPT	Shunt-R120/AREP-R150	Aux Winding-AS540		PMG-MX341/D550
Alternator insulation class	H/H	F/H	H/H	
Alternator IP rating	23			
Main breaker make	Schneider			
ENGINE				
Make	Yanmar	HDI		Cummins
Model	4TNV88	D24		F3.8
Emission compliance	EU Stage V			
Prime power (engine—net kW)	18	37,3	43	82
Cylinders	4 Inline			
Electric supply DC (V)	12			
Speed regulation accuracy (steady state)	±2.5%			±0.25%
Fuel tank, usable capacity—std / extended (l)	N/A / 181			176 / 386
Fuel consumption @ 75% of the load (l/Hr)	3.88	7.2	9.2	16.5
Runtime @ 75% of the load—std / extended fuel tank (hours)	N/A / 47	24 / 54	19 / 42	11 / 23.5
Urea tank—DEF (l)		N/A		55
DIMENSIONS & WEIGHTS				
Length (mm)	1 869	2 207		2 709
Width (mm)	813	965		1 120
Height—std / extended fuel tank (mm)	1 495	1 578 / 1 747		1 999 / 2 099
Dry weight—std / extended fuel tank (kgs)	861	1 220 / 1 217	1 231 / 1 228	1 895 / 1 944
Wet weight—std / extended fuel tank (kgs)	1 003	1 354 / 1 705	2 061 / 2 292	2 061 / 2 292

STANDARD EQUIPMENT

Our generators come with standard features right out of the factory, allowing you to get to work from day one. Covering everything from ease-of-use to productivity, these features set a new standard for portable power equipment.



Yanmar engine (PG20)



Baffles



Large fuel tank



Oil sump pump and containment pump



Drains



50/60Hz Switch



Running gear



Automatic refill system

OPTIONAL EQUIPMENT

At times, you may need to add a specific functionality or a personal touch to your machine. Explore our comprehensive list of options and customize your generator to your heart's content!

STANDARD EQUIPMENT & OPTIONS

STANDARD EQUIPMENT & OPTIONS	PG20	PG40	PG50	PG100
Electronic speed regulation	–	✓	✓	✓
2-element air filter	✓	✓	✓	✓
Fuel filter with water separator	✓	✓	✓	✓
Radiator access door	✓	✓	✓	✓
Coolant fluid and engine oil external drains	✓	✓	✓	✓
Double wall fuel tank standard runtime (min. 11h at 75% of the load)	✓	✓	✓	✓
Containment base, 110% of all fluids	✓	✓	✓	✓
Removable fuel filling port for tank cleaning	✓	✓	✓	✓
Combined containment and fuel tank drain plugs	✓	✓	✓	✓
Forklift pockets	✓	✓	✓	✓
Central lifting point	✓	✓	✓	✓
Safe lifting point access steps	–	–	–	✓
Keys on all access doors	✓	✓	✓	✓
Robust battery isolator switch	✓	✓	✓	✓
Automatic start voltage free contacts	✓	✓	✓	✓
4-pole circuit breaker	✓	✓	✓	✓
Earth leakage protection	fixed 300 mA	adjustable 30 mA—30 A	adjustable 30 mA—30 A	adjustable 30 mA—30 A
Robust connection busbar	✓	✓	✓	✓
Double wall fuel tank extended runtime (min. 24h at 75% of the load)	✓	•	•	•
3-way fuel supply internal valve block / external block / push pull internal	•	•	•	•
Automatic refill system with pumps for fuel, Adblue, internal / external / internal w push-pull	•	•	•	•
Containment / fuel tank drain plugs blockade	•	•	•	•
Peripheral rubber protection for the frame	•	•	•	•
Oil sump pump	•	•	•	•
Digital control panel comap MRS16	•	✓	✓	✓
Synchronisation controller Deif AGC 150	–	–	–	•
Insulation monitoring device	–	•	•	•
Dual frequency	–	✓	✓	✓
Multiple neutral / earthing systems	–	•	•	•
EDF electrical pack	–	•	•	•
Adjustable earth leakage relay (30 mA – 30 A)	•	✓	✓	✓
Earth rod and cable	•	•	•	•
Containment manual drain pump (factory mounted)	•	•	•	•
Socket panel CE (1ph 230 V, 3ph 400 V) with / w/o shunt trip	•	•	•	•
Socket panel UK(1ph 110 V, 3ph 400 V)	–	•	•	•
Socket panel Schuko (1ph 230 V, 3ph 400 V), type B breakers	•	•	•	•
125 A 3-phase socket	–	–	–	•
Powerlocks	–	–	–	•
Battery charger (230 V) and engine block heater	•	•	•	•
Refinery kit	–	•	•	•
Customized color for top/bottom canopy	•	•	•	•

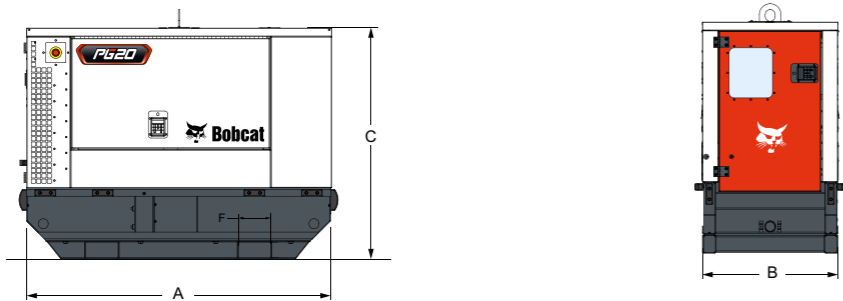
• = option ✓ = standard – = not available

DIMENSIONS & WEIGHTS

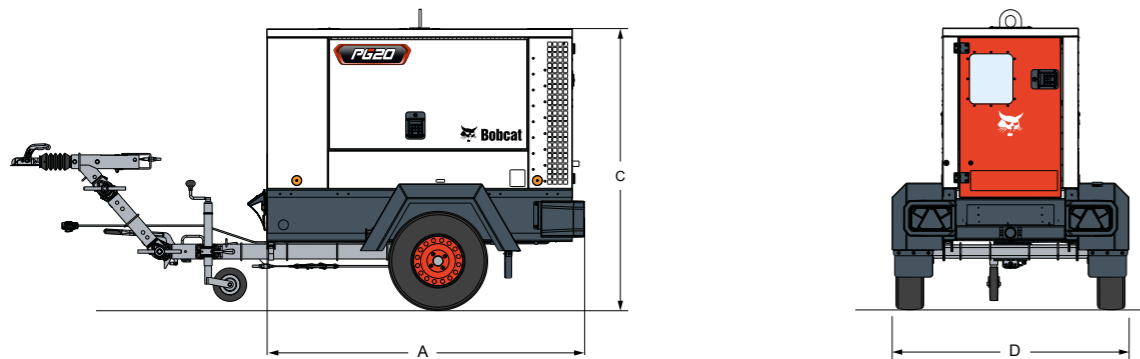
DIMENSIONS & WEIGHTS			
	PG20	PG20 WITH RUNNING GEAR	PG100
A	1 869	1 829	2 709
B	813	813	1 120
C	1 495	1 645	1 999 / 2 099*
D	N/A	1 417	N/A
Dry weight	861	985	1 895 / 1 944*
Wet weight	1 003	1 112	2 061 / 2 292*

*Data for the model with an extended fuel tank

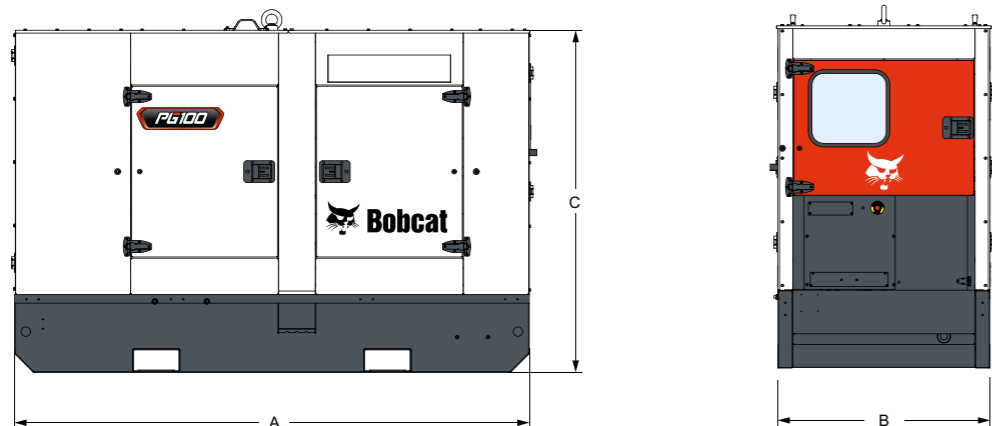
▶ PG20



▶ PG20 WITH RUNNING GEAR



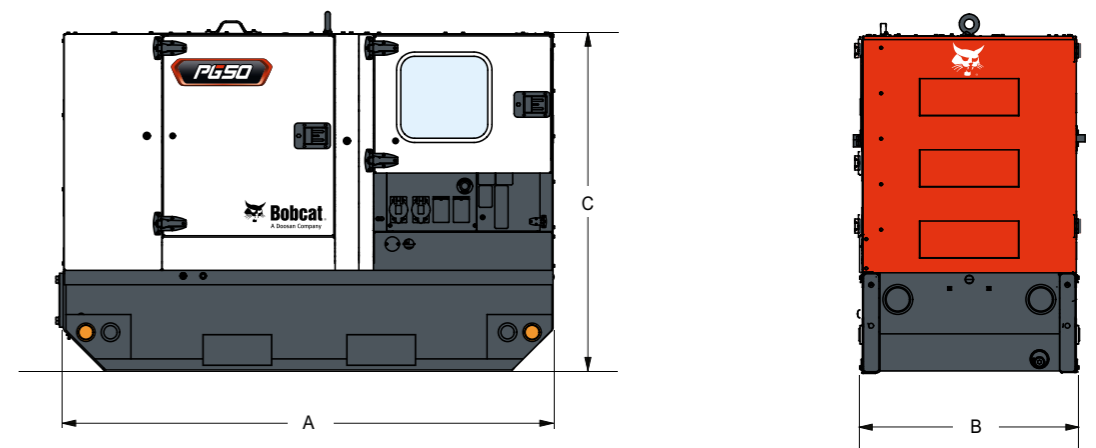
▶ PG100



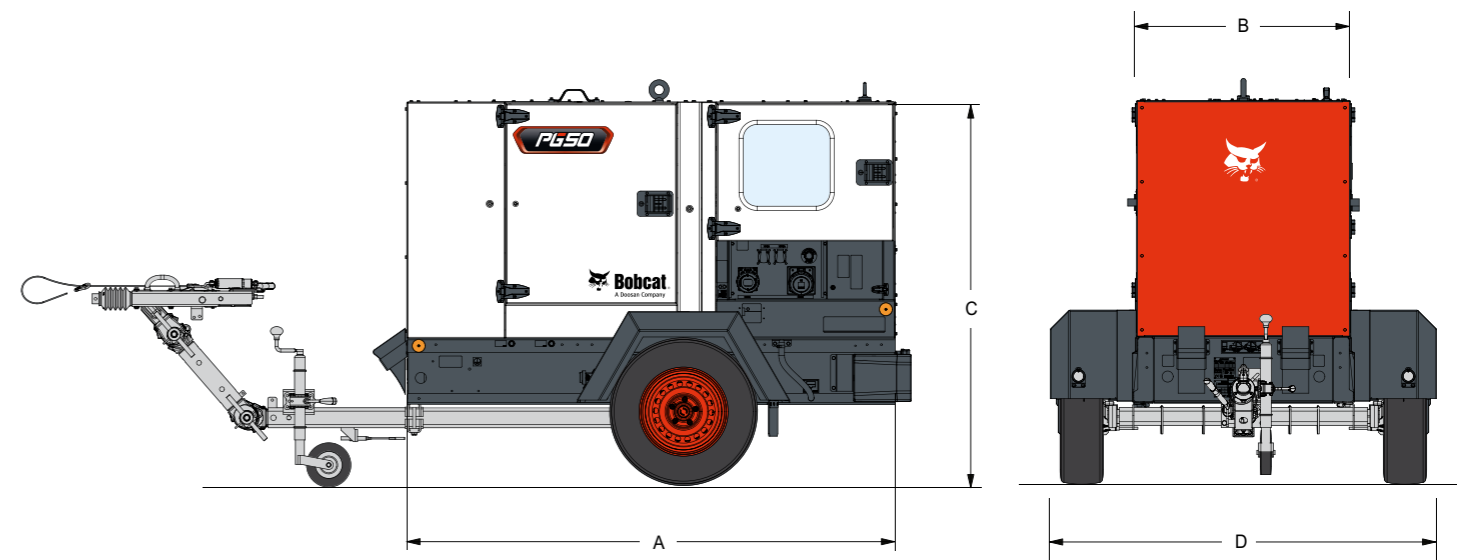
DIMENSIONS & WEIGHTS			
	PG40	PG50	PG40 & PG50 WITH RUNNING GEAR
A		2 207	
B		965	
C	1 578 / 1 747*		1 767 / N/A*
D	N/A		1 744
Dry weight	1 220 / 1 217*	1 231 / 1 228*	N/A
Wet weight	1 354 / 1 705*	2 061 / 2 292*	N/A

*Data for the model with an extended fuel tank

▶ PG40 & PG50



▶ PG40 & PG50 WITH RUNNING GEAR



Certain specification(s) are based on engineering calculations and are not actual measurements. Specification(s) are provided for comparison purposes only and are subject to change without notice. Specification(s) for your individual Bobcat equipment will vary based on normal variations in design, manufacturing, operating conditions, and other factors. Pictures of Bobcat units may show other than standard equipment.



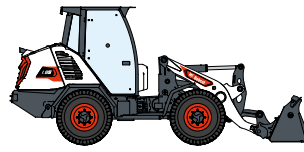
340 MACHINES / 150 ATTACHMENT FAMILIES / 1 TOUGH ANIMAL



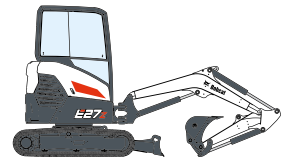
SKID-STEER LOADERS



COMPACT TRACK LOADERS



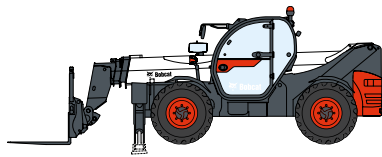
COMPACT WHEEL LOADERS



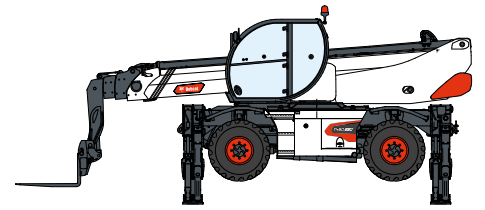
COMPACT EXCAVATORS



FORKLIFTS



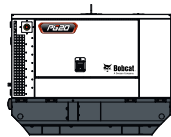
TELEHANDLERS



ROTARY TELEHANDLERS



WAREHOUSE EQUIPMENT



GENERATORS



AIR COMPRESSORS



LIGHT COMPACTION EQUIPMENT



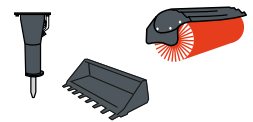
COMPACT TRACTORS



MINI TRACK LOADER



MOWERS



ATTACHMENTS

DOOSAN

Bobcat is a Doosan Company. Doosan is a global leader in construction equipment, power & water solutions, engines, and engineering proudly serving customers and communities for more than a century. | Bobcat and the Bobcat logo are registered trademarks of Bobcat Company in the United States and various other countries. ©2025 Bobcat Company. All Rights Reserved.

*Financing options may vary by country and dealer. Always ask your dealer about currently available financing options. Terms and conditions may apply.

Doosan Bobcat EMEA, U Kodelky 1810, 263 12 Dobříš, Czech Republic

www.bobcat.com

©2025 BOBCAT P4700651-EN (07-25)



Bobcat

GET IN TOUCH WITH US **TODAY**

Click one of the following links or scan the QR code:



Request a quote



Request a demo



Find a dealer

